

# alcrys

Fluid-Control & Services



## CONDENSED CATALOG

[www.alcrys.net](http://www.alcrys.net)



# ALCRYS®

French manufacturer of innovative Pressure Regulating Solution for High-pressure gases up to 1000 bars.

**DESIGN**   
**MANUFACTURING**  
**DEVELOPMENT** 

The role of Alcrys is to introduce a totally new concept with an enhanced added value to end users.

Our skill base and knowledge allow us to pioneer high quality solutions for high-pressure gases.

Each of our products is made to progress the technological evolution and to provide ingenious, safe and reliable solutions.

All our systems are made to improve today and to provide for tomorrow.



**Together,**  
we harness the pressure

# table of contents



## WELCOME TO **ALCRYS®**

- 02 Who are we ?
- 04 Risk Management
- 05 Alcrys® Advantages

## PRODUCTS by **ALCRYS®**

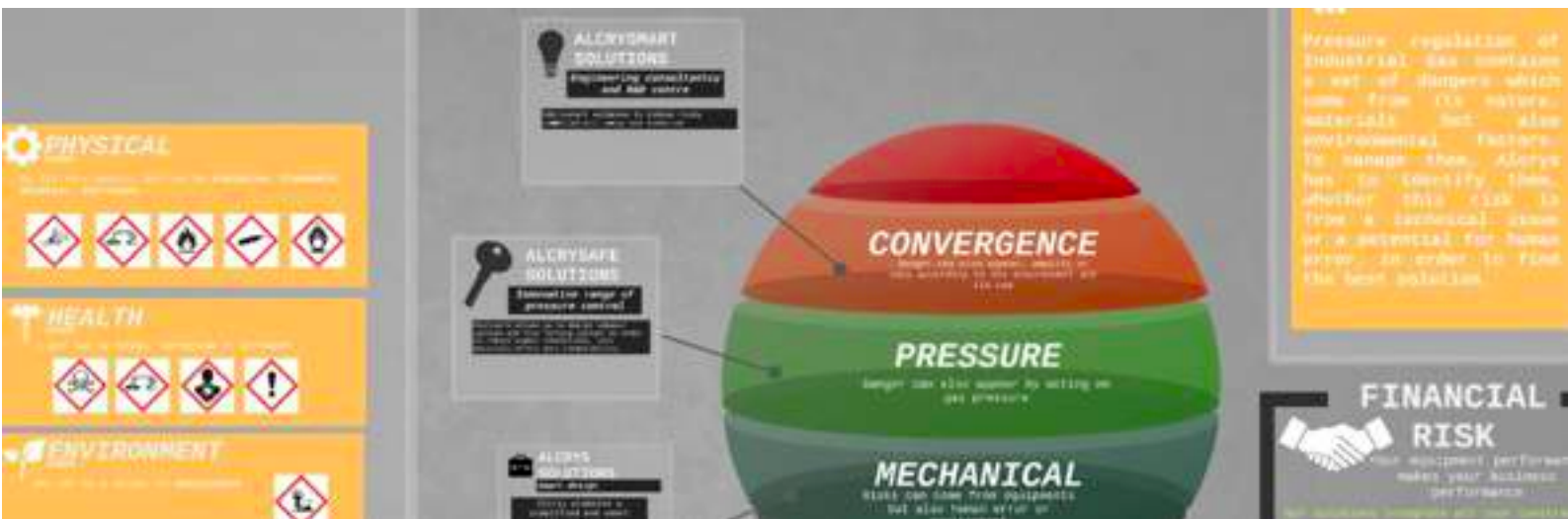
- 06 Classys range
- 07 Alcrysafes® range

## CUSTOMISED **SOLUTIONS**

- 15 Integrated Gas Systems Alcrys®
- 19 Alcrysmart® solutions

## MORE **SKILLS**

- 21 Alcrys® Commitments
- 22 Our Services
- 23 Corporate



Pressure regulation of Industrial Gas contains a set of dangers which come from its nature, materials used but also environmental factors. To manage them, **Alcrys®** has to identify them, whether this risk is from a technical issue or a potential for human error, in order to find the best solution.

### BY NATURE, THERE ARE POTENTIAL DANGERS ASSOCIATED

Gas is, by its very nature more or less unsafe. It can be combustible, corrosive, toxic, asphyxiating, explosive, flammable.... and be a physical, health or environmental danger.



### ... AND SOME EXTRANEEOUS FACTORS

#### \*CONVERGENCE EFFECT

Danger can also appear, amplify or vary according to its environment and its use.

#### \*PRESSURE EFFECT

Pressure accentuates the danger of gas, it is essential the equipment used is fit for purpose.

#### \*MECHANICAL EFFECT

Risks can come from equipment but also from human error and the environment.

Our engineering consultancy and R&D centre, **Alcrysmart®** achieves to reduce risky combinations today and tomorrow.

Our innovative range of pressure control **Alcrysafes®** allows us to design compact systems and free fitting systems in order to reduce number connections. Less materials offers more compatibility.

**Alcrys®** promotes a simplified and smart ecodesign removing significantly risks which are related to human interventions and characteristics of implementation.



**HP**

from 0 to 1000 bars

**MAINTENANCE**  
**FAST&SAFE**  
5 minutes countdown'

With Fast & Safe cartridges conceived by Alcrys, you can service or upgrade your equipment very quickly :

- 1. Remove the screws**
- 2. Replace cartridge\***
- 3. Replace the screws**

*\*Need to upgrade your configuration ?  
Just change cartridge reference.*



**DESIGN**

**CUSTOMISED** : your performance is the aim of our research

**COMPLETE** : turnkey system

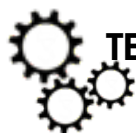
**COMPREHENSIVE SAFETY** : risk management for optimum safety and reliability



**INSTALLATION**

**FAST** : less connections for easy installation

**SPACE-SAVING**: compactness, integration and ergonomics



**TECHNOLOGY**

**DISRUPTIVE** : leading innovation

**CUBE CONCEPT + CARTRIDGE** : exclusive Alcrys®

**“NEXT GENERATION TECHNOLOGY VALVES”**

**MATERIAL**

STEEL

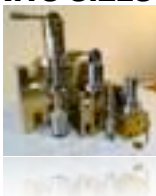
BRASS

ALUMINIUM

**COMPATIBILITE GASES**

● Inert ● Flammable ● Toxic and Corrosive ● Oxidizing

**3 UNITS SIZES**



Our products are available in 3 standards sizes :  
orifices from 1/4" to 2"

**REGULATORS CLASSYS**  
CD200  
CD300  
CR200  
CR300



INOX    **LAITON**    ALUMINIUM

**2 MODELS**

Spring-loaded - CR  
Dome-loaded - CD

**MP** 100 bars\*

**HP** 250 bars\*

**2 SIZES**

Size 2 - CR200  
>1/2" à 1" CD200

Size 3 - CR300  
>1" à 2" CD300



**OPTIONS**

Flanges



**VENT NEEDLE VALVE VDP**  
**GAUGE ISOLATOR VALVE VIM**



INOX    **LAITON**    ALUMINIUM

**TECHNOLOGY**

Needle valve  
Outlet port 1/8" BSPF female

**HP** 370 bars\*

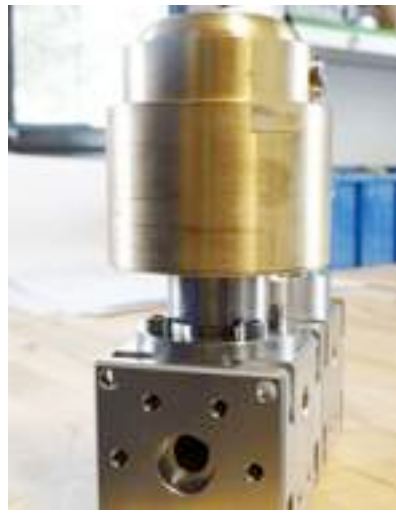
**ADVANTAGES**

Ultra precision  
Easy connection  
Ideal for remote maintenance manometer  
Purge of dead volume\*\*



\*Others, by request.  
\*\*Only for Gauge Isolator Valve

UNIQUE &  
INNOVATIVE  
RANGE OF  
PRESSURISED  
EQUIPMENT  
FROM 0 TO 1000  
BARS

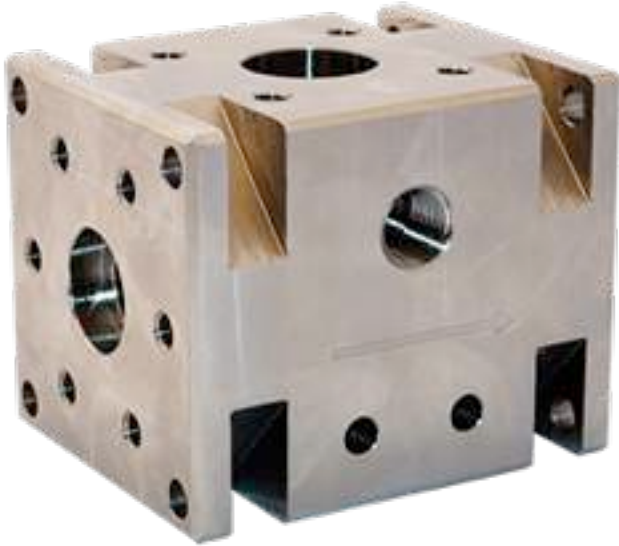


alcrysafe®



Innovation through simplification :  
Alcrysafte brings a new vision of  
high pressurised solutions. Let's  
configure the equipment you need

1 body  
unit  
1 cartridge



CONCEPT  
**CUBE**

**EASE &  
UNLIMITED  
CREATIVITY**

Assemble, juxtapose, fix the equipment you need with ease and safety.

TECHNOLOGY  
**FAST & SAFE**

**MODULARITY** : your configuration fulfills your need

**SIMPLICITY** : the fastest service in 5 minutes countdown

**RELIABILITY** : few components for more compatibility and less risks



**+ EASY + INDEPENDANT + FAST + EFFICIENT + ECONOMIC**



cartridges  
**SPRING-LOADED**

**SPRING-LOADED REGULATOR** SL 100  
SL 200

STEEL

BRASS

ALUMINIUM

**TECHNOLOGY**

Spring-loaded adjustment setting  
Balanced poppet

**HP 370 bars\***

**PRESSURE CONTROL RANGE**

from 0 to 300 bars

**2 SIZES**

Size 1 - SL100 : 1/4" - 3/8" - 1/2"

Size 2 - SL200 : 1/2" - 3/4" - 1"

**FINISHING'S ON DEMAND**

Drilled pressure gauge port  
Automatic decompression  
Hermetic spring cap

**MAINTENANCE FAST&SAFE**  
5 minutes countdown'

**OPTIONS**

Pressure gauge  
Limit stop



SL100

**DOME-LOADED REGULATOR** DL 100  
DL 200

STEEL

BRASS

ALUMINIUM

**TECHNOLOGY**

Operating Control Ratio I/I  
Balanced poppet

**HP 370 bars\***

**1** **PRESSURE CONTROL RANGE**  
0-300 bars

**2 SIZES**

Size 1 - DL100 : 1/4" - 3/8" - 1/2"

Size 2 - DL200 : 1/2" - 3/4" - 1"

**FINISHING'S ON DEMAND**

Drilled pressure gauge port

**MAINTENANCE FAST&SAFE**  
5 minutes countdown'

**OPTIONS**

Spring loaded regulator for remote control  
Pressure gauge



DL100

\*For higher operating pressure than 370 bars, please consult us.

cartridges  
**SPRING-LOADED**



SLM100

**SPRING-LOADED SLM 100  
MULTI-RANGE REGULATOR**

STEEL	BRASS	ALUMINIUM
-------	-------	-----------

**TECHNOLOGY**

Balanced poppet  
Multi-piston sensing element  
Spring-loaded adjustment setting

**HP 370 bars\***

**1 SIZE**

Size 1 - SLM100 : 1/4" - 3/8" - 1/2"

**3** PRESSURE CONTROL RANGES

- 0-20 bars
- 0-40 bars
- 0-100 bars

**FINISHING'S ON DEMAND**

Drilled pressure gauge port  
Automatic decompression  
Hermetic spring cap

**MAINTENANCE FAST&SAFE**  
5 minutes countdown'

**OPTIONS**

Pressure gauge  
Limit stop



DLP100

**DOME-LOADED DLP 100  
PROPORTIONAL REGULATOR DLP 200**

STEEL	BRASS	ALUMINIUM
-------	-------	-----------

**TECHNOLOGY**

Operating Control Ratio:  
29 - 12 - 6  
Balanced poppet

**HP 370 bars\***

**2 SIZES**

Size 1 - DLP100 : 1/4" - 3/8" - 1/2"  
Size 2 - DLP200 : 1/2" - 3/4" - 1"

**1** PRESSURE CONTROL RANGE  
0-300 bars

**FINISHING'S ON DEMAND**

Drilled pressure gauge port

**MAINTENANCE FAST&SAFE**  
5 minutes countdown'

**OPTIONS**

Spring loaded regulator for remote control  
Pressure gauge



cartridges  
**FILTER &  
PRESSURE GAUGE**

**FILTER** F 100  
F 200

STEEL

BRASS

ALUMINIUM

**TECHNOLOGY**

Sintered stainless steel  
Sintered bronze

**2 SIZES**

Size 1 - F100 : 1/4" - 3/8" - 1/2"  
Size 2 - F200 : 1/2" - 3/4" - 1"

**FINISHING'S ON DEMAND**

Drilled pressure gauge port

**OPTION**

Pressure gauge

**HP** 370 bars\*

Filtration  
threshold  
10 µm  
20 µm

**MAINTENANCE**  
FAST & SAFE  
5 minutes countdown'



F 100

cartridges  
**VALVE**

**NON-RETURN** CV 100  
**VALVE** CV 200  
CV 300

STEEL

BRASS

ALUMINIUM

**TECHNOLOGY**

Valve stem conical shape

**3 SIZES**

Size 1 - CV100 : 1/4" - 3/8" - 1/2"  
Size 2 - CV200 : 1/2" - 3/4" - 1"  
Size 3 - CV300 : 1" - 1 1/2" - 2"

**FINISHING'S ON DEMAND**

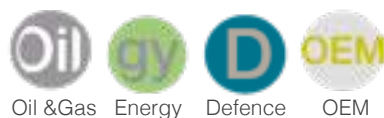
Drilled pressure gauge port

**OPTION**

Pressure gauge

**HP** 370 bars\*

**MAINTENANCE**  
FAST & SAFE  
5 minutes countdown'



CV 100

\*For higher operating pressure than 370 bars, please consult us

cartridges  
**SHUT-OFF VALVES**



MN 100

**MANUAL NEEDLE VALVE** MN 100  
MN 200  
MN 300

STEEL

BRASS

ALUMINIUM

**TECHNOLOGY**

Pressure-balanced poppet  
Progressive opening  
Non rotative system

**HP** 370 bars\*

**3 SIZES**

Size 1 - MN100 : 1/4" - 3/8" - 1/2"

Size 2 - MN200 : 1/2" - 3/4" - 1"

Size 3 - MN300 : 1" - 1 1/2" - 2"

**MAINTENANCE**  
FAST&SAFE  
5 minutes countdown'



**FINISHING'S ON DEMAND**

Drilled pressure gauge port  
Lockable



S102

**SOLENOID VALVE**  
2/2 NC S102  
3/2 NC S103

STEEL

BRASS

ALUMINIUM

**TECHNOLOGY**

Pressure-balanced poppet  
Direct acting

**HP** 370 bars\*

**VOLTAGE**

24VDC-230VAC\*\*

**MAINTENANCE**  
FAST&SAFE  
5 minutes countdown'

**SIZE**

Size 1: 1/4" - 3/8" - 1/2"

2/2NF- S102

3/2NF- S103



**FINISHING'S ON DEMAND**

Drilled pressure gauge port



S103

\*\* Others, by request.

# SHUT-OFF VALVES cartridges

## PNEUMATIC ACTUATED CONTROL VALVE 2/2 NC

P102  
P202  
P302

STEEL

BRASS

ALUMINIUM

### TECHNOLOGY

Pressure-balanced poppet  
Actuator pressure :  
from 5 to 8 bars

**HP** 370 bars\*

### 3 SIZES

Size 1 - P102: 1/4" - 3/8" - 1/2"  
Size 2 - P202: 1/2" - 3/4" - 1"  
Size 3 - P302: 1" - 1 1/2" - 2"

**MAINTENANCE**  
FAST&SAFE  
5 minutes countdown'



### FINISHING'S ON DEMAND

Drilled pressure gauge port



P102

## PNEUMATIC ACTUATED CONTROL VALVE 3/2 NC

P103

STEEL

BRASS

ALUMINIUM

### TECHNOLOGY

Pressure-balanced poppet  
Actuator pressure :  
from 5 to 8 bars

**HP** 370 bars\*

### SIZE

Size 1 - P103: 1/4" - 3/8" - 1/2"

**MAINTENANCE**  
FAST&SAFE  
5 minutes countdown'



### FINISHING'S ON DEMAND

Drilled pressure gauge port



P103

\*For higher operating pressure than 370 bars, please consult us

# MODULAR system

Modules M<sub>1...n</sub>  
Mx - M3



Mx

## ASSEMBLY

Assembly all positions  
Individual modules  
Alcrysafe® compatible

**HP 370 bars\***

## OPTIONS

Mounting brackets  
Flanges : Welded  
BW or Screwed  
BSPP  
Liaison kits between-modules



\*For higher operating pressure than 370 bars, please consult us



M3

## range of CONNECTORS

Screwed flanges\*  
BW-SW



Welded flanges\*  
BSPP



Liaison kits\*



## TECHNOLOGY

Resistance and sealing tailored for HP gas installations

## SIZES

from 1/4" to 2"

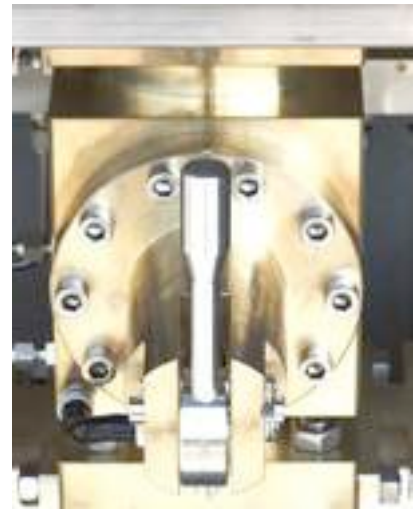
## TIME-SAVED SOLUTIONS



Connections can be fitted to modular systems in our workshop.

\*Other threads, contact us.  
\*Calibrated ports on request.

UNIQUE &  
CUSTOMISED  
SYSTEMS FOR  
HIGH PRESSURE  
REGULATION



# integrated gas system

alcrus



Our goal is to provide the system or system components that conform exactly to your specific requirements

# wall OUTFITS



## PRESSURE REDUCING PANEL



### INSTALLATION

Fast & Easy  
Space saving

### USE

Simplified

### SERVICES INCLUDED

Baseline study  
Sizing  
Design  
Manufacturing  
Start-up Assistance

**HP** 250 bars\*

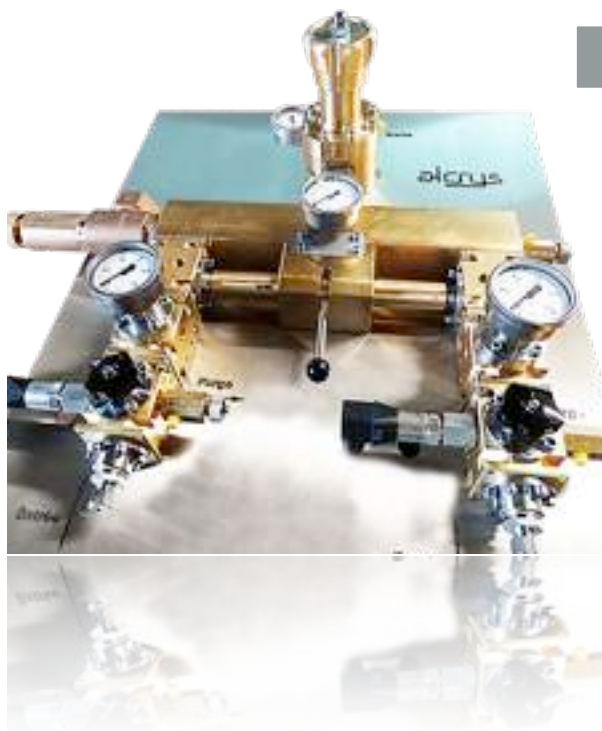
**MAINTENANCE**  
FAST&SAFE  
5 minutes countdown'

### OPTIONS\*\*

Installation  
Commissioning  
Service



## MANIFOLD CHANGEOVER PANEL



### INSTALLATION

Fast & Easy  
Space saving

### USE

Simplified

### SERVICES INCLUDED

Baseline study  
Sizing  
Design  
Manufacturing  
Start-up Assistance

**HP** 370 bars\*

**MAINTENANCE**  
FAST&SAFE  
5 minutes countdown'

### OPTIONS\*\*

Installation  
Commissioning  
Service







**PRESSURE  
REDUCING SKID**

**FILTRATION  
SKID**



**+ DESIGN**

CUSTOMIZED  
COMPLETE  
COMPREHENSIVE SAFETY

**+ INSTALLATION**

FAST  
SPACE-SAVING  
STREAMLINED CONNECTIONS

**+ TECHNOLOGY**

NEXT GENERATION  
empowered by Alcrysmart ®

**+ QUALITY**

TURNKEY SYSTEM  
MAINTAINABILITY UNMATCHED

**+ OPTIONS\*\***



**MAINTENANCE**  
FAST&SAFE  
5 minutes countdown'



Oil & Gas



Energy



Defence



OEM

**HP**

**370 bars\***

\*Others, by request.  
\*\*Discover our services p.22

other  
**SYSTEM**



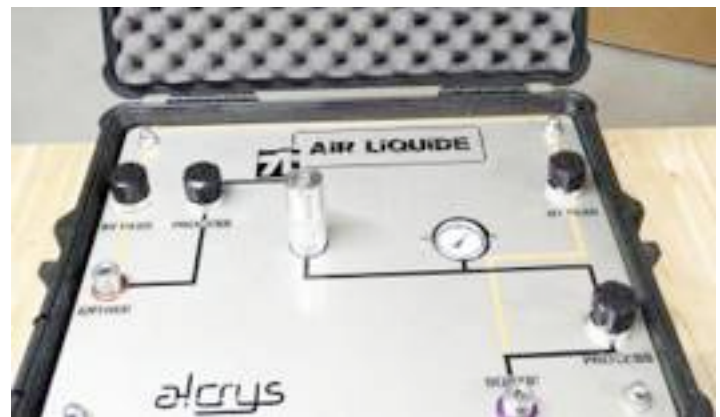
**PRESSURE  
REDUCING LINE**

**HP** 250 bars\*

**MAINTENANCE**  
FAST&SAFE  
5 minutes countdown'



**REDUCING  
UNIT**



**CYLINDER CHARGING  
AND INTEGRATED FILLING  
UNIT SYSTEM**

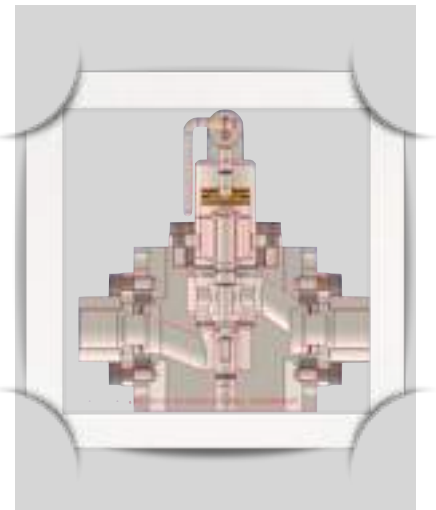
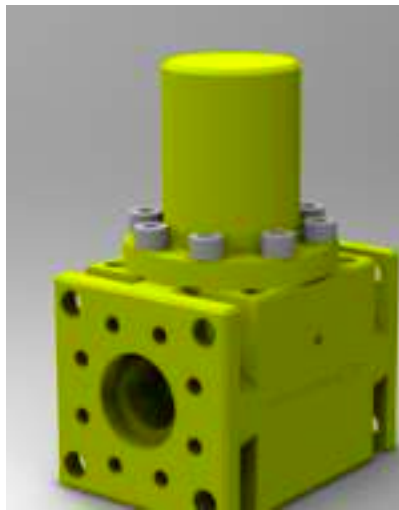


**TEST  
BENCH**

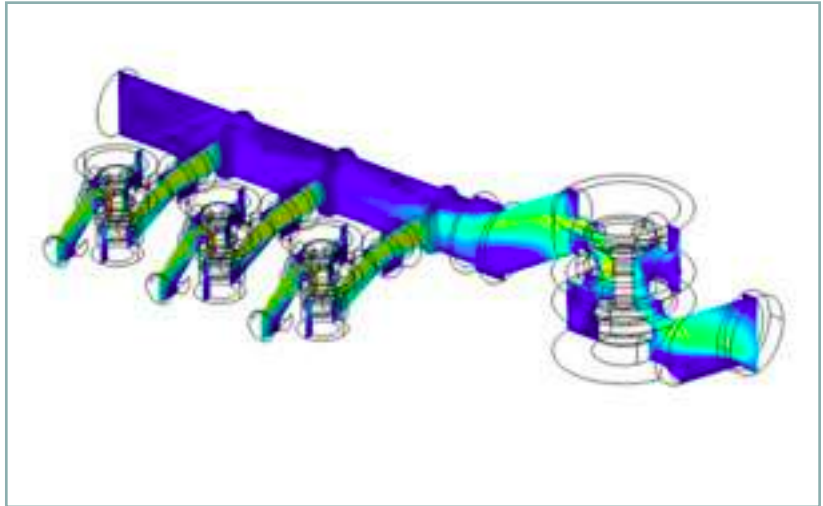


\*For higher operating pressure than 370 bars, please consult us

DEVELOPMENT  
CUSTOMIZED  
SOLUTIONS  
INNOVATION  
TECH.VIGILANCE  
QUALITY  
MANAGEMENT



alcrysmart®



Since an exceptional project requires custom development, Alcrysmart® meets your requirements

## A comprehensive response for your specific need.

**1** DEPARTMENT  
ENGINEERING  
CONSULTANCY  
R&D CENTRE  
QUALITY MANAGEMENT  
SYSTEM

*Alcrysmart® is an unit gathering many skills. A synergy of knowledge for your most demanding technical projects!*

### Our Values Added

Alcrysmart® develops technical solutions to solve your most challenging problems. In this way, Alcrysmart® designs as a whole for optimal use and perfect risk coverage.

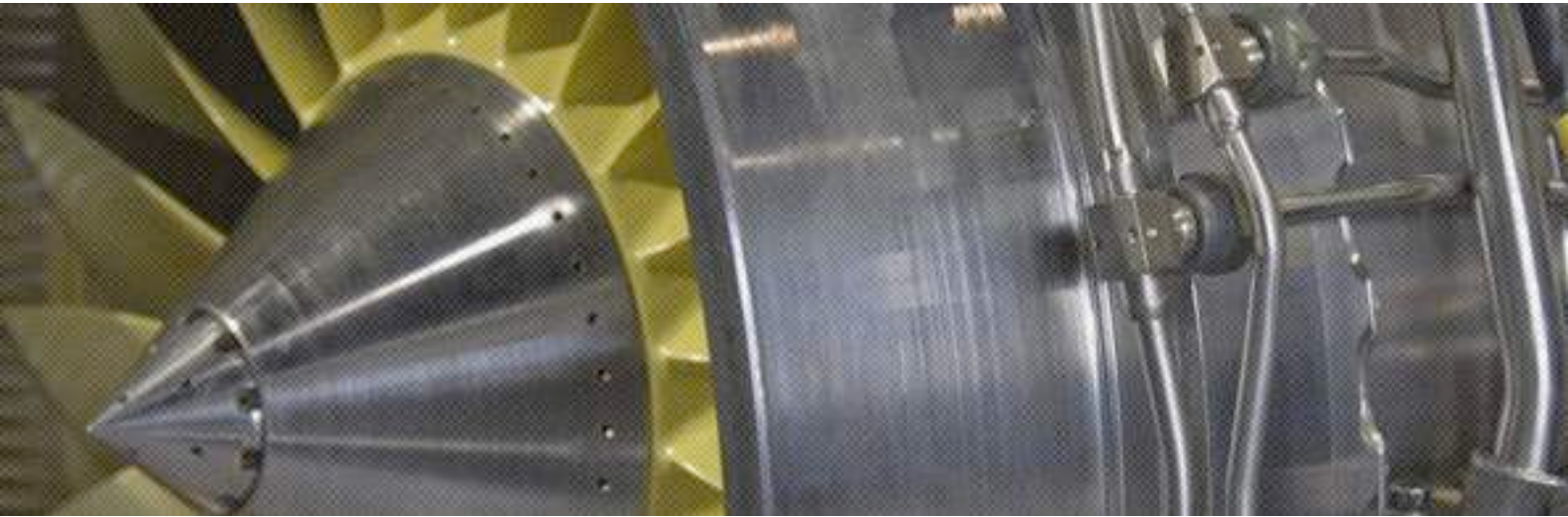
# VA

**HT** HIGH TECHNOLOGY  
CUTTING EDGE  
TECHNOLOGY  
TOOLS MASTERY  
MECHANICAL  
ENGINEERING & DESIGN...

Systems are designed by Alcrysmart® as a whole, aligned with technologies you need for mission success both today and tomorrow.

# Bespoke Approach

# our COMMITMENTS



Since Quality and Safety are main criteria, our foundation is based upon our **Global Security Contract** and **Quality Guaranteed by Alcrys®** .



The **Global Security** Contract is an agreement established by **Alcrys®**, applicable to the total design of all over-pressure regulating solutions. It is an integral part of our approach to developing innovative systems giving time-saving solutions.



The Quality Policy of **Alcrys®** is to guarantee its customers an optimal coverage against risk, to offer complete customer satisfaction. In our approach, we respect international pressure norms, standards and regulations. The majority of our customers have very detailed specifications demanding stringent safety requirements in highly regulated industries such as Oil & Gas, Defence or Energy. From the outset the highest quality and security are at the heart of **Alcrys®** design.

Fluid distribution equipment, installations, piping... Our Services department is at your disposal to optimize your business.

## **INSTALLATION**

---

All of our systems take account of the installation site. Our Installation service offers you a full service to guarantee an optimal implementation.

## **COMMISSIONING**

---

Designing in Comprehensive Safety allows us to develop easy-to-use systems. Our startup service is an additional guarantee for a perfect mastery of the installation.

## **SERVICE**

---

When you service our equipment you can also change the settings. Our team stands at your disposal to analyze your new needs or provide security checking devices. Service gets better with Alcrys.

## **TURNKEY SYSTEM**

---

We also offer additional installation services : integration of systems, rehabilitation devices, piping solutions...





## OUR REFERENCES

AIR LIQUIDE - SAFRAN - ENERIA - CNES - CEA - DCNS - ENERIA - AQUALUNG - CGG - GENERAL ELECTRIC - LINDE - PURE HELIUM GULF - ONERA - SBM OFFSHORE...



Alcrys® leads a management quality according to standard, in anticipation of a formal certification in the last quarter of 2015.

## FREEMIND

Our approach ? To offer you simplicity in solutions which are familiar. Alcrys® offers you one contact who leads all your project from A to Z. One person with full responsibility.

All our control solutions are made in our workshops, in France.



Technical informations in this catalog are not contractual and may be subject to change.

## Rewards & Networks

2011 Réseau Entreprendre Laureate

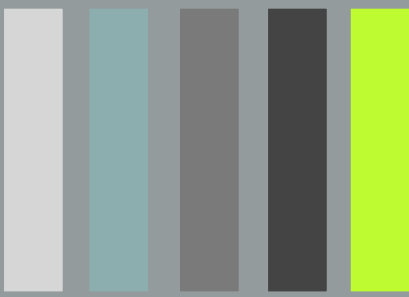
2012 Oseo Prize  
EADS Prize  
Développement Total Prize  
Développement Créa 13 Laureate

2013 Pôle Risques & Crittchimie

2014 Créa 13 Laureate

Alcrys® partner





Together,  
we harness the pressure



Fluid-Control & Services

### Alcrys Fluid-Control & Services

Chemin de Barlatier - Le Canet  
13590 Meyreuil (FRANCE)

Tél. : 33(0)4 42 21 05 54

[info@alcrys.net](mailto:info@alcrys.net)

[www.alcrys.fr](http://www.alcrys.fr)