

1 Pressure regulator 3 possibilities
 0-20 bars
 0-40 bars
 0-100 bars

Technology

Spring-loaded adjustment setting

Multi-piston sensing element : three pressure control ranges

Balanced poppet : any effects of inlet pressure loss on outlet pressure is considerably reduced.

function

A spring-loaded regulator controls the operator specified outlet pressure keeping it constant over a range of inlet pressures, within the limits of its technical characteristics¹.

Application

Designed for High-Pressure gas uses, the Alcrysafe® spring-loaded multi-range(3) regulator can be employed in conjunction with the whole range of gases and liquids compatible with the component materials.

However, some specific on-site installation factors can limit possible uses of the pressure regulator.



Spring-loaded multi-range(3) regulator

Size 1/HP/Stainless steel

alcrysafe®

The Alcrysafe® Pressurised Equipment range has been developed in our in-house R&D team. Technical expertise and innovation combined to provide optimal performance and security standards for your high pressure industrial gas applications.

¹ in accordance with the formula (2P+1) : PE = 2P + 1 bar
 Please, consult us if this principle is not applicable

Technical data

Working pressure	Pressure control ranges		
	370 bars maxi 5360 psi maxi	0 - 20 bars	0-290 psi
	0 - 40 bars	0-580 psi	0-1450 psi
	0 - 100 bars	0-1450 psi	
Temperature range	-20°C / +70°C		-4°F / +158°F
Inlet port	1/4" F BSPP	3/8" F BSPP	1/2" F BSPP
Outlet port	1/4" F BSPP	3/8" F BSPP	1/2" F BSPP
Seat size	1,5 mm (non-balanced)	3 mm	5,4 mm
DN (Nominal Diameter)	12		
Pressure Gauge port	2x 1/4" BSPP pre-tapped		
Mounting	All mounting positions possible		
	Allows integration with Alcrysafe® modular systems		
Weight	3,3 kg		

Brackets	Two tapped M6x8 on the underside face		
	Four Ø6 ports for bracket mounting (brackets optional)		
Body material*	Stainless steel 1.4404		
Seat materials*	PAI Torton	PCTFE	Peek
Gasket materials*	Nitrile	FKM	EPDM
Cleaning	Inert Gas procedure MO-PROD0103		
Documentation	2.2 Certificate of Conformity (COC) according to EN 10204		
	General operating instructions		
Finishing's on demand	Drilled pressure gauge port		
	Automatic decompression		
	Hermetic spring cap		
Options	Mounting brackets		
	Flanges : Welded BW or Screwed BSPP (please refer to Range of connectors technical data sheet n°9111)		

* others by request

Recommendation : we advise one sets the upstream filtration at 25µm minimum. Please, refer to "Filter" technical data sheet n°2211.

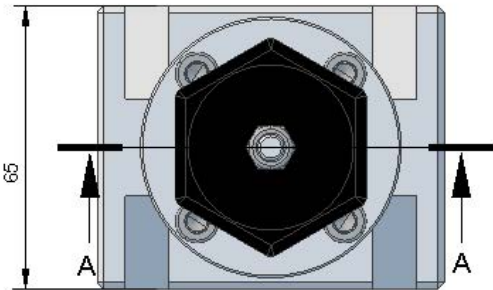
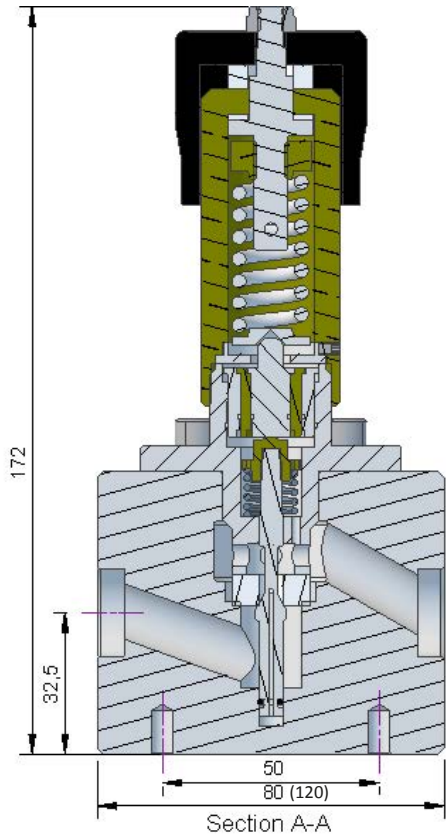
Spring-loaded
 multi-range(3) regulator
 Size 1/HP/Stainless steel

alcrysafe®

v.1/10-2014

Data
 Sheet
 n°1111

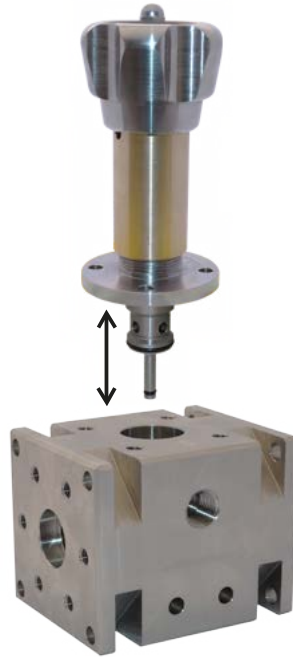
d Drawings



f Fast&safe maintenance

Maintenance cartridge

Safety, speed and cost-effective.
On-site maintenance only takes a few minutes !



Designed under our **Comprehensive Safety norm** guarantees performance and comprehensive safety of the installation (refer to *Alcrysafe®* range technical notice)

Solution
Scalable
Modular
Integrated
Safe
Cost-effective

The Fast&safe maintenance cartridges offer unlimited scalability !

The regulation function, provided by the multi-range spring-loaded regulator in this case can be easily reconfigured (dome-loaded, proportional or spring-loaded regulator) to respond to new requirements for the installation.

Order references

Standard configuration : Multi-range regulator - ARS1HS1001
Fast&safe cartridge - CRS1HS-001

Please refer to the table below for other Pressurised Equipment and cartridge configurations :

Gaskets	Nitrile	FKM	EPDM
Seat			
PAI	standard configuration	ref. + TV	ref. + TE
PCTFE	ref. + KN	ref. + KV	ref. + KE
Peek	ref. + PN	ref. + PV	ref. + PE

Compatible gases*

- Inert Gases
- Flammable Gases
- Toxic and Corrosive Gases

* Please, refer to one of our engineers



Spring-loaded
multi-range (3) regulator
Size L/HP/Stainless steel

alcrys safe®

Data
Sheet
n°1111

v.1/10-2014